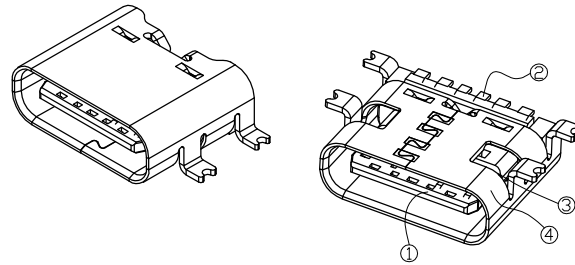
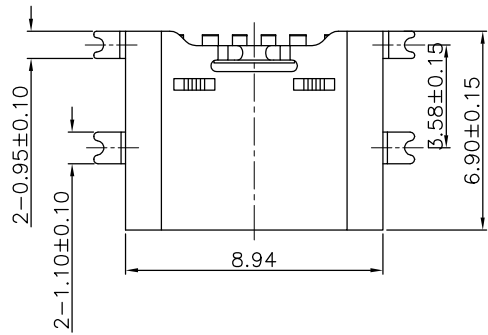


RoHS Compliant

Goldconn®

REV	ECN No.	DATE	REMARK
A0	NEW	2021.10.29	NEW RELEASE

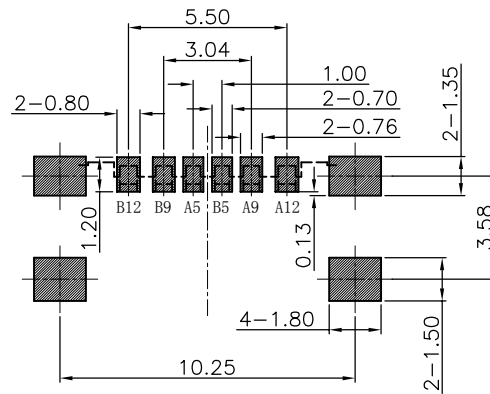
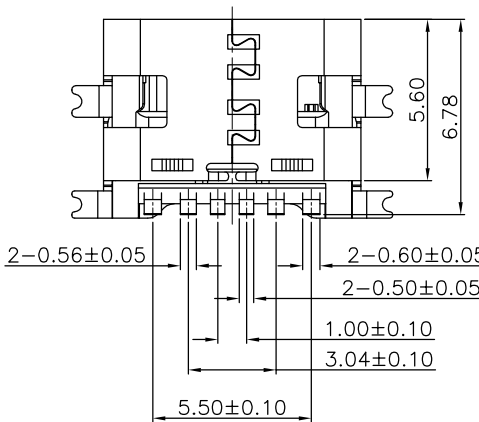
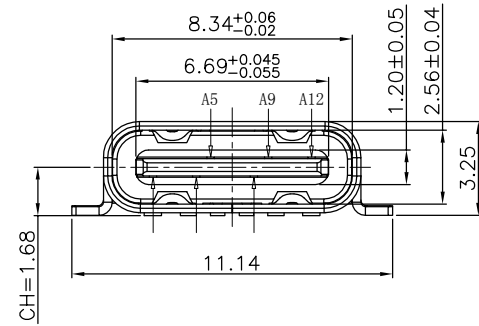


NOTE:

- MATERIAL SPECIFICATION:**
 - HOUSING: HIGH TEMPERATURE RESISTANT PLASTIC, UL94 V-0.
 - CONTACTS: COPPER ALLOY (C2680)
 - MID PLATE: STAINLESS STEEL SUS 301
 - FRONT SHELL: STAINLESS STEEL SUS 304
- PLATING SPECIFICATION:**
 - CONTACTS:
 - Ni 50u" MIN. UNDER PLATED OVER ALL.
 - Au PLATED ON THE FUNCTIONAL AREA OF CONTACT. (GOLD PLATING THICKNESS FOLLOW THE P/N)
 - FRONT SHELL:
 - Ni 50u" MIN. UNDER PLATED OVER ALL.
 - MID PLATE:
 - CLEAR ONLY
- MECHANICAL PERFORMANCE,**
 - INSERTION FORCE: 0.5~2.0kgf.
 - REMOVAL FORCE: 0.8kgf~2.0kgf.
 - DURABILITY: 10000 CYCLES.
- ELECTRICAL PERFORMANCE,**
 - CURRENT RATING: 3.0A
VOLTAGE RATING: 5V
 - LLCR:
 - VBUS & GND PINS AND OTHER PINS: 40mΩ/PIN MAX.
 - SHIELD: 50mΩ/MAX.
 - LLCR MAX. CHANGE OF ALL PINS: 10mΩ.
 - INSULATION RESISTANCE: 100MΩ MIN
 - DIELECTRIC WITHSTAND VOLTAGE, AC 100V FOR 1 MINUTE.
- ENVIRONMENTAL PERFORMANCE:**
 - OPERATING TEMPERATURE: -30°C~+85°C.
- IR REFLOW:**
 - THE PEAK TEMPERATURE ON THE BOARD SHALL BE MAINTAINED FOR 10 SECONDS AT 260°C.
- PART NUMBER CODE:** (产品料号)

CF206-002 S L B 11 XX - 02
(1) (2) (3) (4)

- HOUSING MATERIAL:
L: LCP
- HOUSING COLOR:
B: BLACK
- CONTACTS PLATED:
11: 接触镀金 1u" 其它 GF
- PACKING OPTIONS
R: 卷装 (常用料)
VR: 卷装+真空包装



RECOMMEND P.C.B LAYOUT
TOLERANCE UNSPECIFIED ±0.05mm

USB TYPE C PIN ASSIGNMENTS

PIN NUMBER	SIGNAL NAME	PIN NUMBER	SIGNAL NAME
A5	CC1	B12	GND
A9	VBUS	B9	VBUS
A12	GND	B5	CC2

PART NO.: SEE THE PART NUMBER CODE	
QUALITY SYMBOL 0 ∇ = 0	GENERAL TOLERANCES (UNLESS SPECIFIED)
	x.xxxx ± ---
	x.xxx ± 0.10
	x.xx ± 0.20
	x.x ± 0.30
ANGULAR ± ---°	

Goldconn Technologies Co., Ltd		
TITLE TYPE CF 6P单排 SMT CONN(全贴)		
DWG.NO. CF206-002-02	SHEET NO. 1 OF 1	
DIMENSION STYLE MM ONLY	DESIGN UNITS METRIC	SCALE 1:1

DRAWN BY SAM	DATE 2021.10.29
CHECKED BY JAY	DATE 2021.10.29
APPROVED BY JACKY	DATE 2021.10.29
THIRD ANGLE PROJECTION	

frame size: A4