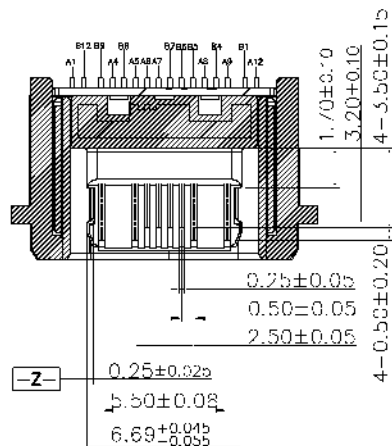
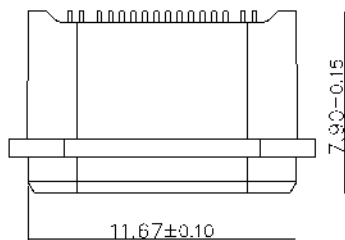
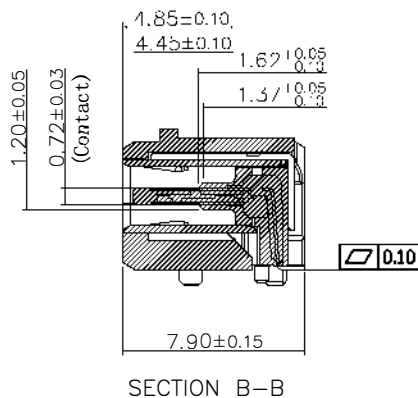
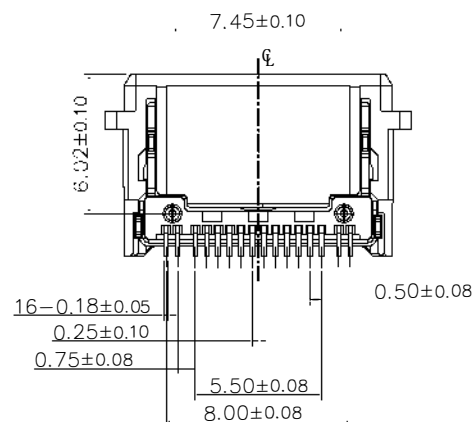
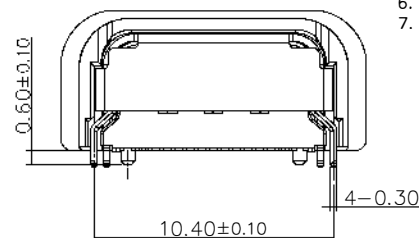
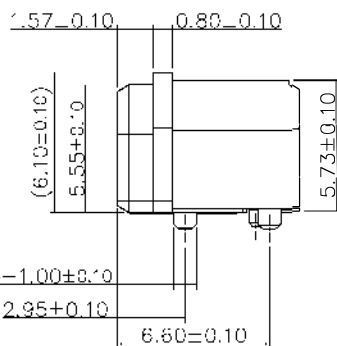
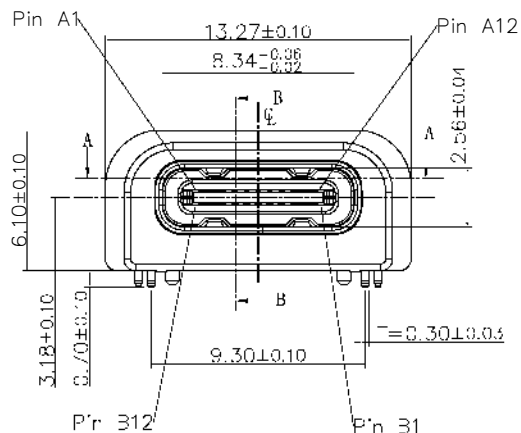


REV	ECN No.	DATE	REMARK
A	NEW	2019.05.08	NEW RELEASE



SECTION A-A



SECTION B-B

NOTE:

- Material:
 - All Housing: LCP(Polyplastics),Black,Thermoplastics,UL94V-0
 - Insulation Jacket: LCP(Polyplastics),Black,Thermoplastics,UL94V-0
 - Contact: Copper Alloy
 - Mid Plate: Stainless Steel
 - Outer Shell: Stainless Steel
 - Inner Shell: Stainless Steel
- FINISH:
 - Contact: Au 3u" Min.
 - Au 1u" Min. on Solder Area
 - 80~200u" Nickel Underplating Over All
 - Mid-Plate: 40~200u" Nickel Over All
 - Inner & Outer Shell: 40~200u" Nickel Over All
- Outer Shell (Insulator) Minimum Thickness 0.40mm
- Electrical Characteristics:
 - Current Rating: 5A For Pin(A4,A9,B4,B9)
 - 1.25A For Pin(A1,A12,B1,B12,B5)
 - 0.25A For Others Pin
 - Insulation Resistance: 100MΩ Min.
 - Contact Resistance: 50 mΩ Max.
 - Dielectric Withstanding Voltage: 500V AC/0.1S/0.1mA
- Mechanical Characteristics:
 - Insertion Force: 5~20N
 - Extraction Force: Initial: 8~20N
 - After durability: 6~20N
 - Durability :10000 Cycles
 - Operating Temperature: -30°C TO +85°C
- 防水等级IPX4

7. PART NUMBER CODE:

C F115 - 16 L B XX R - 68
① ②

① HOUSING: B:BLACK
② CONTACTS PLATED: 12:接触镀金3u"焊脚区镀金1u"

MATERIAL NO.:

PART NUMBER CODE

REVIEW TABLE FOR DETAILS

QUALITY SYMBOL	GENERAL TOLERANCES (UNLESS SPECIFIED)
0	x.xxxxx ± ---
0	x.xxx ± 0.10
0	x.xx ± 0.25
0	x.x ± 0.30
0	ANGULAR ± ---

GOLDCONN TECHNOLOGIES COMPANY LIMITED

TITLE
USB TYPE C FEMALE
16PIN SMT TYPE CH3.18防水型

DOCUMENT NO.
CF115-16-68

SHEET NO.
1 OF 2

DIMENSION STYLE
MM ONLY

DESIGN UNITS
METRIC

SCALE
5:1

DATE
2019.05.08

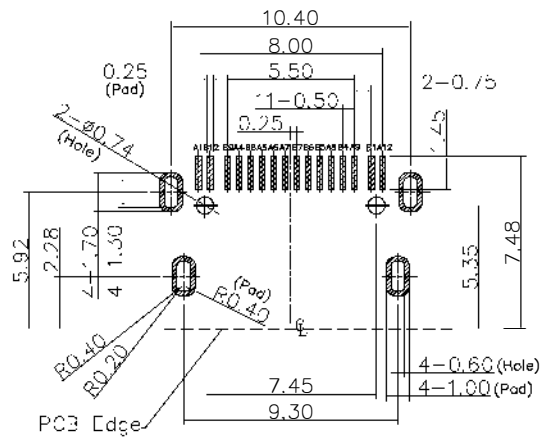
CHECKED BY
JAY DATE
2019.05.08

APPROVED BY
JACKY DATE
2019.05.08

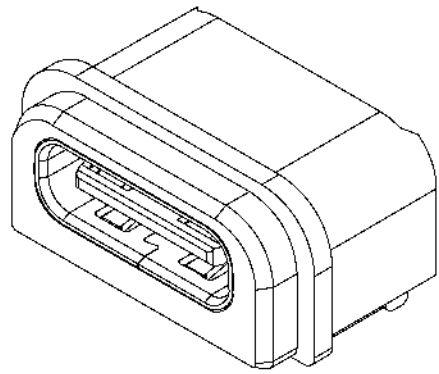
THIRD ANGLE PROJECTION



REV	ECN No.	DATE	REMARK
A	NEW	2019.05.08	NEW RELEASE



Recommended PCB Layout
General Tolerance ± 0.05
 Pad Area
Top View



PIN ASSIGNMENT

PIN NUMBER	SIGNAL NAME	PIN NUMBER	SIGNAL NAME
A1	GND	B12	GND
A2	TX1+	B11	RX1+
A3	TX1-	B10	RX1-
A4	VBUS	B9	VBUS
A5	CC1	B8	SBU2
A6	D+	B7	D-
A7	D-	B6	D+
A8	SBU1	B5	CC2
A9	VBUS	B4	VBUS
A10	RX2-	B3	TX2-
A11	RX2+	B2	TX2+
A12	GND	B1	GND

9	UP Terminal	Copper alloy	Note.2	ISET
8	Down Terminal	Copper alloy	Note.2	ISET
7	Insulation Jacket	LCP E130i BK UL 94V-0, HF		IPCS
6	Down Molding			IPCS
5	Up Molding			IPCS
4	Second Molding			IPCS
3	Mid-Plate	Stainless Steel	Note.2	IPCS
2	Inner Shell	Stainless Steel	Note.2	IPCS
1	Outer Shell	Stainless Steel	Note.2	IPCS
项次 NO.	品称 NAME	材料 MATERIAL	表面处理 PLATING	备注 MARK

MATERIAL NO.:

PART NUMBER CODE: _____

REVIEW TABLE FOR DETAILS

QUALITY SYMBOL	0	GENERAL TOLERANCES (UNLESS SPECIFIED)	TITLE USB TYPE C FEMALE 16PIN SMT TYPE CH3.18防水型	DRAWN BY SAM	DATE 2019.05.08				
	x.xxxx	± ---				CHECKED BY JAY	DATE 2019.05.08		
	x.xxx	± 0.10						APPROVED BY JACKY	DATE 2019.05.08
	x.xx	± 0.25							
	x.x	± 0.30							
ANGULAR	± ---°								

GOLDCONN TECHNOLOGIES COMPANY LIMITED

DOCUMENT NO. CF115-16-68

SHEET NO. 2 OF 2

DIMENSION STYLE: MM ONLY

DESIGN UNITS: METRIC

SCALE: 5:1

THIRD ANGLE PROJECTION