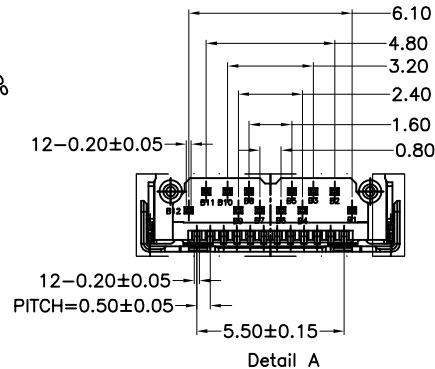
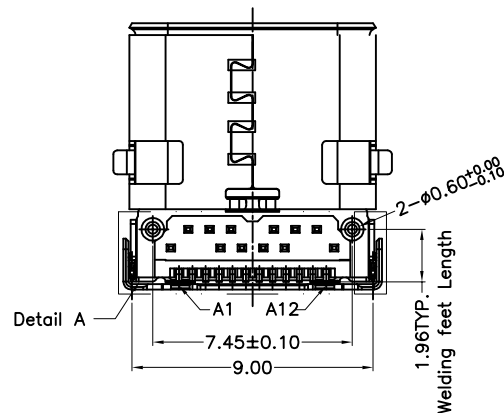
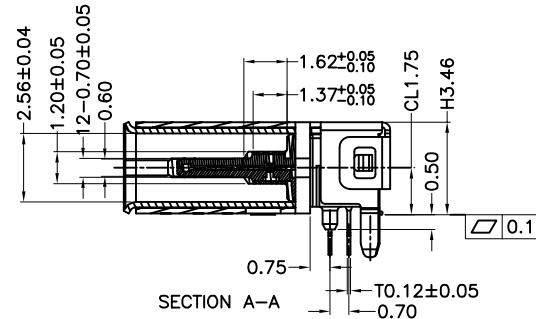


NOTE:

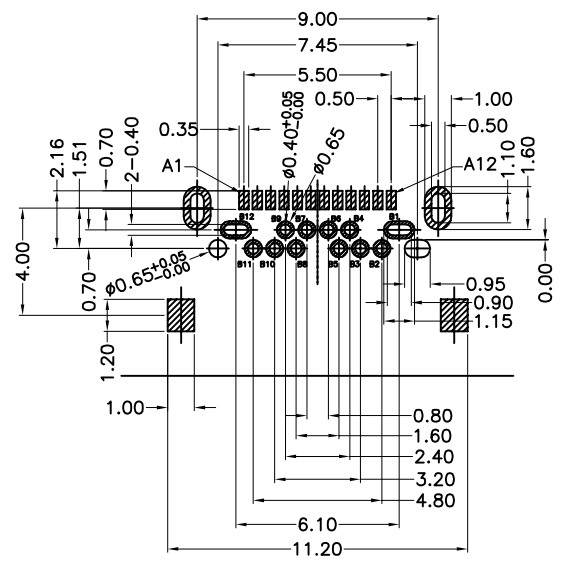
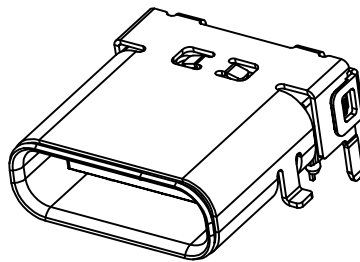
- MATERIAL SPECIFICATION:
  - HOUSING: HIGH TEMPERATURE RESISTANT PLASTIC (LCP), UL94 V-0.
  - CONTACTS: COPPER ALLOY (C18150) T=0.12mm
  - MID PLATE: STAINLESS STEEL (SUS301) T=0.15mm
  - EMC PLATE: STAINLESS STEEL (SUS301) T=0.10mm
  - OUTER/INNER SHELL: STAINLESS STEEL (SUS304) T=0.20mm
- PLATING SPECIFICATION:
  - CONTACTS:
    - Ni 50u" MIN. UNDER PLATED OVER ALL.
    - Au PLATED ON THE FUNCTIONAL AREA OF CONTACT. (GOLD PLATING THICKNESS FOLLOW THE P/N)
    - MATT Sn PLATED ON THE SOLDER AREA OF CONTACT.
  - OUTER/INNER SHELL:
    - Ni 30u" MIN. UNDER PLATED OVER ALL.
  - MID PLATE:
    - None
  - EMC PLATE:
    - None
- MECHANICAL PERFORMANCE,
  - INSERTION FORCE: 5~20N.
  - EXTRACTION FORCE: 8~20N INITIAL, 6~20N AFTER TEST;
  - DURABILITY: 10000 CYCLES.
- ELECTRICAL PERFORMANCE,
  - CURRENT RATING: 5A MIN FOR VBUS, 1.25A FOR GND, 0.25A MIN FOR OTHERS. VOLTAGE RATING: 20V MAX.
  - LLCR:
    - VBUS & GND PINS AND OTHER PINS: 40mΩ/PIN MAX.
  - INSULATION RESISTANCE: 100MΩ MIN
  - DIELECTRIC WITHSTAND VOLTAGE, AC 100V FOR 1 MINUTE.
- ENVIRONMENTAL PERFORMANCE:
  - OPERATING TEMPERATURE: -25°C~+85°C.
- IR REFLOW:
  - THE PEAK TEMPERATURE ON THE BOARD SHALL BE MAINTAINED FOR 10 SECONDS AT 260°C MAX.
- MID PLATE, EMC PLATE, SHELL CONNECTED TOGETHER

8. PART NUMBER CODE: (产品料号)  
CF224 - 005 S L B XX R - C3  
(1) (2) (3) (4)

- (1) HOUSING MATERIAL: L:LCP
- (2) HOUSING COLOR: B:BLACK
- (3) CONTACTS PLATED: 02:半金鍍3u"
- (4) PACKING OPTIONS R:TAPE & REEL



PART NO.: SEE THE PART NUMBER CODE		Goldconn Technologies Co., Ltd		DRAWN BY SAM	DATE 2022.03.03
QUALITY SYMBOL 0 $\nabla$ 0	GENERAL TOLERANCES (UNLESS SPECIFIED)		TITLE		
	x.xxxx	± ---	TYPE C F24 PIN TOP DOUBLE SHELL (CL=1.75 L=10.0mm) 外壳前脚SMT后脚DIP		
	x.xxx	± 0.10	DWG.NO.	CF224-005-C3	SHEET NO. 1 OF 2
	x.xx	± 0.25	DIMENSION STYLE	MM ONLY	DESIGN UNITS
x.x	± 0.30	SCALE	1:1	APPROVED BY JACKY	DATE 2022.03.03
ANGULAR	± ---	THIRD ANGLE PROJECTION			



RECOMMEND P.C.B LAYOUT (COMPONENT SIDE)  
TOLERANCE FOR PCB LAYOUT IS ± 0.05

USB TYPE-C FULL-FEATURED RECEPTACLE INTERFACE PIN ASSIGNMENTS

PIN	Signal Name	Description	PIN	Signal Name	Description
A1	GND	Ground return	B12	GND	Ground return
A2	SSTXp1	Positive half of first SuperSpeed TX differential pair	B11	SSRXp1	Positive half of first SuperSpeed RX differential pair
A3	SSTXn1	Negative half of first SuperSpeed TX differential pair	B10	SSRXn1	Negative half of first SuperSpeed RX differential pair
A4	Vbus	Bus Power	B9	Vbus	Bus Power
A5	CC1	Configuration Channel	B8	SBU2	Sideband Use (SBU)
A6	Dp1	Positive half of the USB 2.0 differential pair-Position 1	B7	Dn2	Negative half of the USB 2.0 differential pair-Position 2
A7	Dn1	Negative half of the USB 2.0 differential pair-Position 1	B6	Dp2	Positive half of the USB 2.0 differential pair-Position 2
A8	SBU1	Sideband Use (SBU)	B5	CC2	Configuraation Channel
A9	Vbus	Bus Power	B4	Vbus	Bus Power
A10	SSRXn2	Negative half of second SuperSpeed RX differential pair	B3	SSTXn2	Negative half of second SuperSpeed TX differential pair
A11	SSRXp2	Positive half of second SuperSpeed RX differential pair	B2	SSTXp2	Positive half of second SuperSpeed TX differential pair
A12	GND	Ground return	B1	GND	Ground return

<b>PART NO.:</b> SEE THE PART NUMBER CODE		<b>Goldconn Technologies Co., Ltd</b> 司		<b>DRAWN BY</b> SAM	<b>DATE</b> 2022.03.03	
QUALITY SYMBOL 0 $\nabla$ 0	<b>GENERAL TOLERANCES (UNLESS SPECIFIED)</b>		<b>TITLE</b> TYPE C F24 PIN TOP DOUBLE SHELL (CL=1.75 L=10.0mm) 外壳前脚SMT后脚DIP			
	x.xxxx	± ---	<b>DWG.NO.</b> CF224-005-C3	<b>SHEET NO.</b> 2 OF 2	<b>CHECKED BY</b> JAY	<b>DATE</b> 2022.03.03
	x.xxx	± 0.10			<b>APPROVED BY</b> JACKY	<b>DATE</b> 2022.03.03
	x.xx	± 0.25	<b>DIMENSION STYLE</b> MM ONLY	<b>DESIGN UNITS</b> METRIC	<b>SCALE</b> 1:1	
	x.x	± 0.30	<b>THIRD ANGLE PROJECTION</b>			
ANGULAR	± ---°					