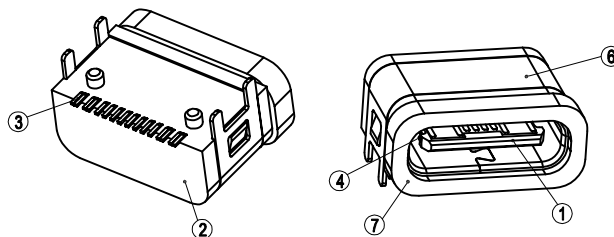
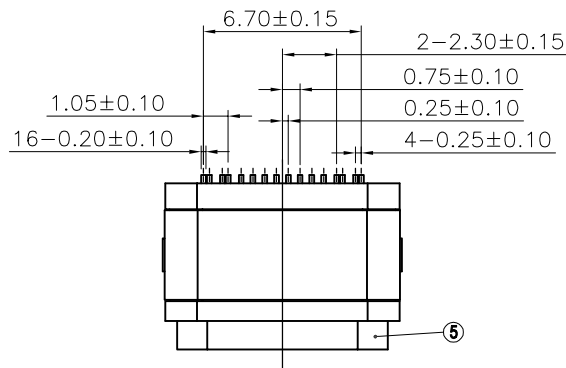
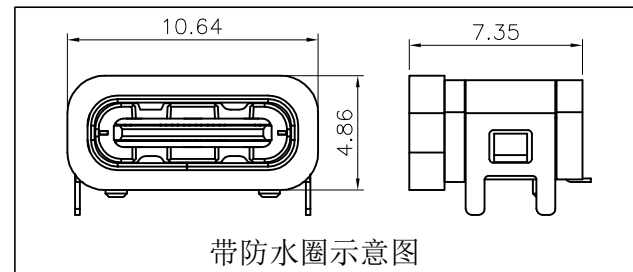
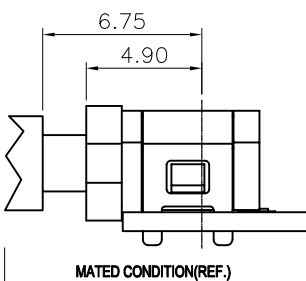
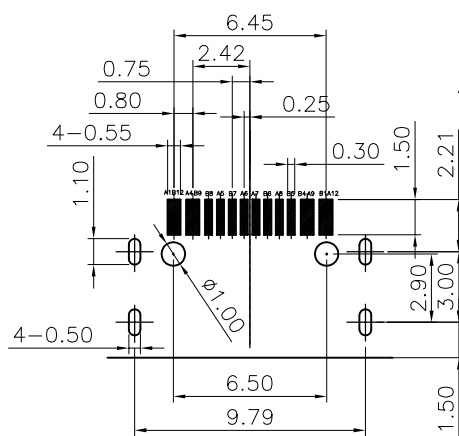
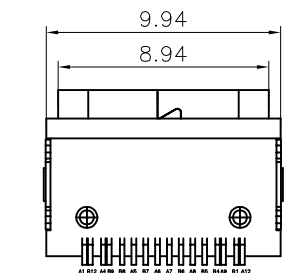
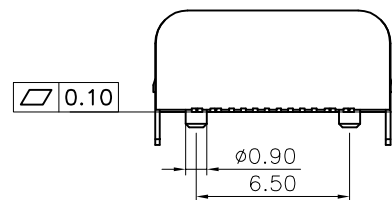
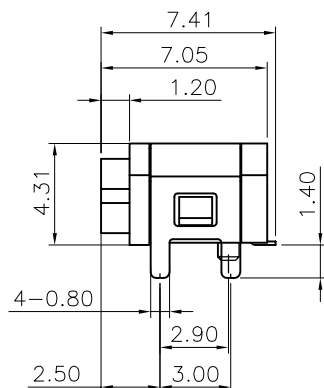
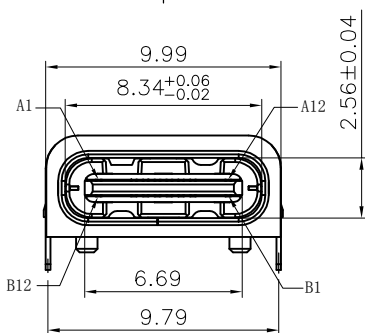


RoHS Compliant

REV	ECN No.	DATE	REMARK
A	NEW	2019.06.06	NEW RELEASE



NOTE:
 1. Electrical Characteristics:
 1-1: Current Rating: 3A For Pin(A4,A9,B4,B9)
 1.25A For Pin(B5)
 0.25A For Others Pin
 1-2: VOLTAGE RATING:5V
 1-3: Insulation Resistance: 100MΩ Min.
 1-4: Contact Resistance:
 VBUS & GND PINS AND OTHER PINS: 40mΩ/PIN MAX.
 SHIELD:50mΩ/MAX.
 SHIELD:LLCR MAX. CHANGE OF ALL PINS: 10mΩ.
 1-5: Dielectric Withstanding Voltage: 100V/AC 1Minute
 2. Mechanical Characteristics:
 Insertion Force: 5~20N
 Extraction Force: Initial: 8~20N
 After durability: 6~20N
 Durability :10000 Cycles
 3. Operating Temperature: -25°C TO +85°C
 4.WATER PROOFNESS:THISPRODUCTIS BASED ON IPX7.
 5.PART NUMBER CODE:(产品料号)
 CF248-16SL X XX R-99
 (1)(2)
 (1) HOUSING COLOR:
 B:BLACK
 (2) CONTACTS PLATED:
 11: 金1u"



A1	GND	B12	GND
A4	VBUS	B9	VBUS
A5	CC1	B8	SBU2
A6	DP1	B7	DN2
A7	DN1	B6	DP2
A8	SBU1	B5	CC2
A9	VBUS	B4	VBUS
A12	GND	B1	GND
PIN	SIGNAL NAME	PIN	SIGNAL NAME

RECOMMENDED P.C.B. LAYOUT
 TOLERANCE UNSPECIFIED ±0.05mm

NO.	DESCRIPTION	MATERIAL	REMARKS	QTY
7	防水圈	硅胶	BLACK	1PCS
6	OUTER SHELL	STAINLESS STEEL SUS 304	Ni Plated	1PCS
5	INNER SHELL	STAINLESS STEEL SUS 304	Ni Plated	
4	SHIELDING PLATE	STAINLESS STEEL SUS 301	CLEAR ONLY	1PCS
3	CONTACT	COPPER ALLOY C2680	Au/Ni Plated	1SET
2	SHELL HOUSING	HIGH TEMPERATURE PLASTIC	BLACK	1PCS
1	HOUSING	HIGH TEMPERATURE PLASTIC	BLACK	1PCS

PART NO.: SEE THE PART NUMBER CODE		GOLDCONN TECHNOLOGIES COMPANY LIMITED		DRAWN BY SAM	DATE 2019.06.06
GENERAL TOLERANCES (UNLESS SPECIFIED)		TITLE USB TYPE C 单排16P防水板上型		CHECKED BY JAY	DATE 2019.06.06
QUALITY SYMBOL	x.xxxxx	DWG.NO. CF248-16-99		APPROVED BY JACKY	DATE 2019.06.06
0	x.xxx	SHEET NO. 1 OF 1		THIRD ANGLE PROJECTION	
0	x.xx	SCALE 1:1			
0	x.x	DIMENSION STYLE MM ONLY		DESIGN UNITS METRIC	
0	ANGULAR	FRAME SIZE: A4			