

NOTE:

- Electrical Characteristics:
  - 1-1: Current Rating: 5A For Pin(A4,A9,B4,B9)  
1.25 A For Pin(B5)  
0.25A For Others Pin
  - 1-2: VOLTAGE RATING: 20V
  - 1-3: Insulation Resistance: 100MΩ Min.
  - 1-4: Contact Resistance:  
VBUS & GND PINS AND OTHER PINS: 40mΩ/PIN MAX.  
SHIELD: 50mΩ/MAX.  
SHIELD: LCCR MAX. CHANGE OF ALL PINS: 10mΩ
  - 1-5: Dielectric Withstanding Voltage: 100V/AC 1Minute.
- Mechanical Characteristics:
  - Insertion Force: 5~20N
  - Extraction Force: Initial: 8~20N
  - After durability: 6~20N
  - Durability :10000 Cycles
- Operating Temperature: -25°C TO +85°C
- MID PLATE, EMC PLATE, SHELL CONNECTED TOGETHER.

5. PART NUMBER CODE: (产品料号)

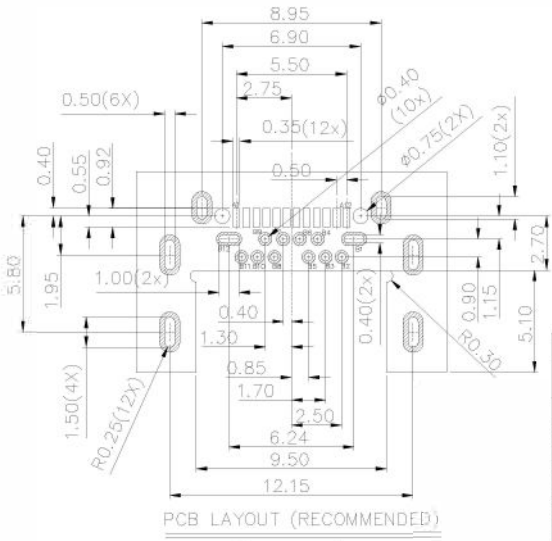
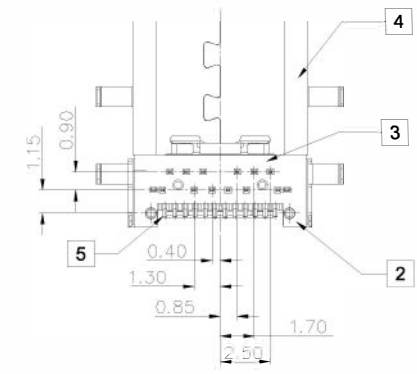
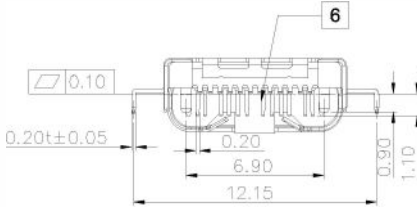
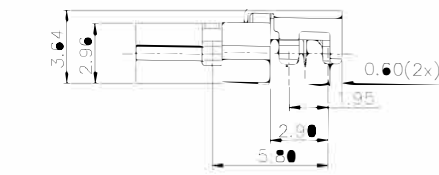
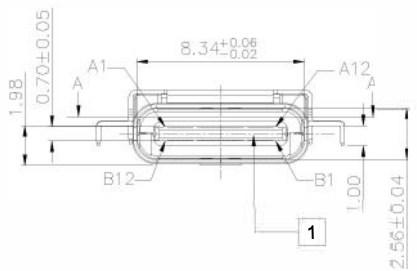
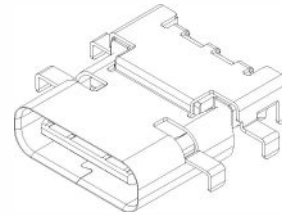
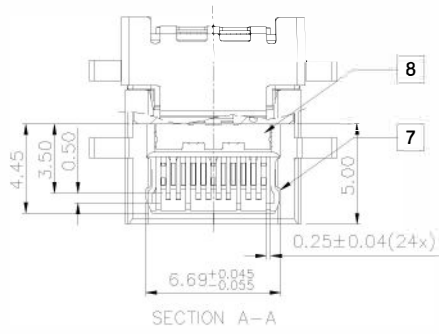
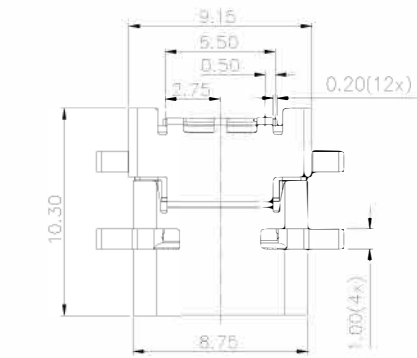
CF324-009 S X X XX R-C3  
(1) (2)(3) (4)

USB TYPE-C PIN ASSIGNMENTS

PIN	Signal Name	PIN	Signal Name
A1	GND	B12	GND
A2	SSTXp1	B11	SSRXp1
A3	SSTXn1	B10	SSRXn1
A4	VBUS	B9	VBUS
A5	CC1	B8	SBU2
A6	Dp1	B7	Dn2
A7	Dn1	B6	Dp2
A8	SBU1	B5	CC2
A9	VBUS	B4	VBUS
A10	SSRXn2	B3	SSRXn2
A11	SSRXp2	B2	SSTXp2
A12	GND	B1	GND

- HOUSING MATERIAL: L-LCP
- HOUSING COLOR: B: BLACK
- CONTACTS PLATED:
  - 01: 半金锡 5u"
  - 02: 半金锡 3u"
  - 04: 半金锡 5u"
- PACKING OPTIONS: R: TAPE & REEL

Item	Title	Material	Dispose	Q'TY
1	Insemold housing	LCP	Black	1PCS
2	Insemold-Top Contact	LCP	Black	1PCS
3	Insemold-Bottom Contact	LCP	Black	1PCS
4	Shell	Stainless Steel T=0.20	Ni: 30u" Min.	1PCS
5	Top Contact	Copper Alloy T=0.12	Mating Area: See P/N	12PCS
6	Bottom Contact	Copper Alloy T=0.12	Solder Trails: Ni: 50u" Min, Sn 80u" Min.	12PCS
7	Mid Plate	Stainless Steel	Ni: 30u" Min, Sn 80u" Min.	1PCS
8	EMC plate	Stainless Steel		2PCS



PART NO.: SEE THE PART NUMBER CODE

QUALITY SYMBOL:  $\nabla=0$

GENERAL TOLERANCES (UNLESS SPECIFIED)	+	---
X.XXXXX	±	---
X.XXX	±	0.10
X.XX	±	0.25
X.X	±	0.30
ANGULAR	±	---

GOLDCONN TECHNOLOGIES COMPANY LIMITED

TITLE: USB 3.1 C TYPE 沉板前DIP/后SM T6脚插板(外壳0.2厚)

DWG. NO.: CF324-009-C3

SHEET NO.: 1 OF 1

DIMENSION STYLE: MM ONLY

DESIGN UNITS: METRIC

SCALE: 1:1

DRAWN BY: SAM	DATE: 2022.02.17
CHECKED BY: JAY	DATE: 2022.02.17
APPROVE BY: JACKY	DATE: 2022.02.17

THIRD ANGLE PROJECTION